

Beat
Eating disorders

EMPOWERING CARE:

**ENHANCING EATING DISORDER
AWARENESS AND SUPPORT IN ESSEX**

Event information

THE MAIN EVENT

DATE:

10 October 2023

LOCATION:

Civic Centre, Duke St, Chelmsford CM1 1JE

For a map and directions please [click here](#).

TIME:

9am-4:30pm

VENUE

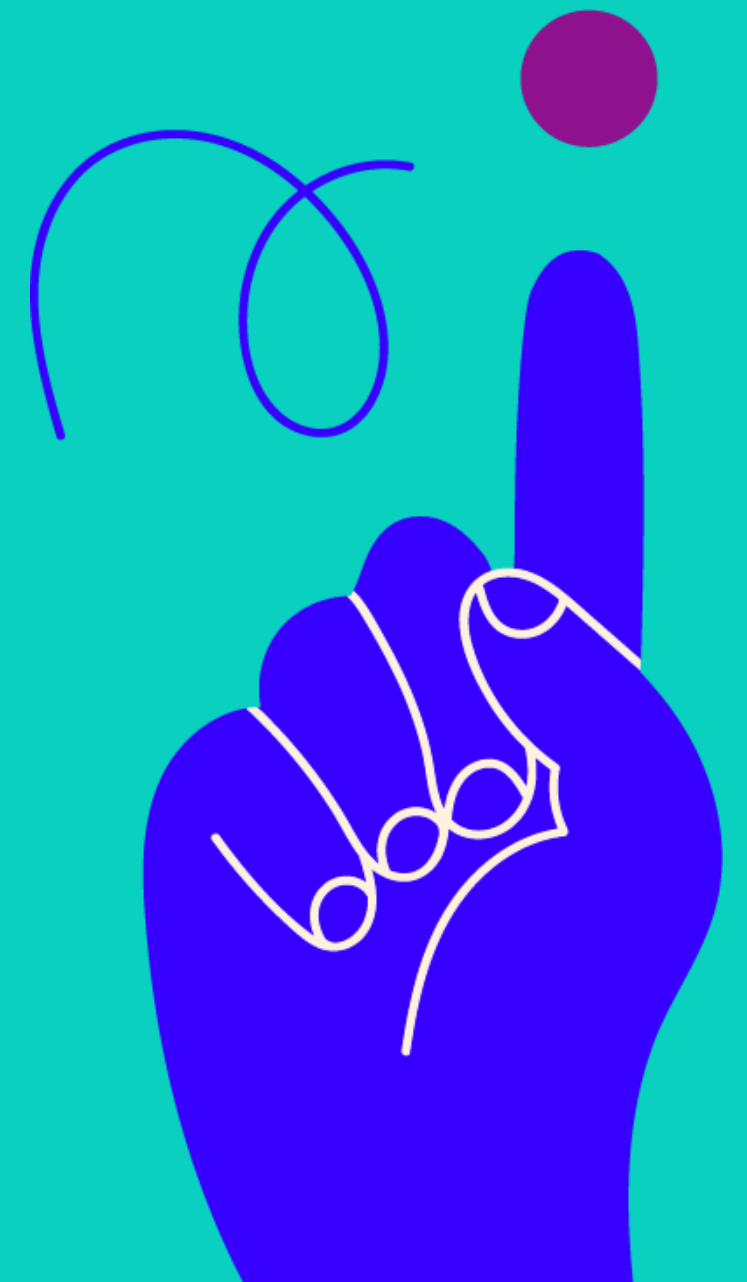
If you would like to familiarise yourself with the plans for this event, you can find details about our speakers and the complete programme right [here](#).

On arrival at the venue please enter through the main entrance accessed via Duke street. The event will be taking place on the first floor.

On arrival, please report to the registration desk in the foyer on the first floor from 9 am on Tuesday 10th October. You will receive your name badge and programme upon registration.

Please always wear your name badge during the event. Delegates will be requested to return their name badges at the end of the event.

No physical tickets will be sent out beforehand.



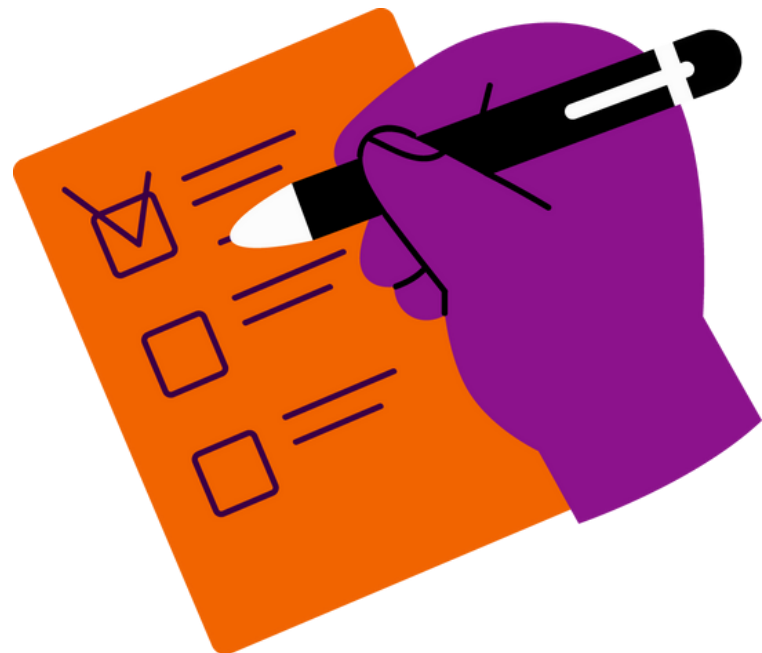
PROGRAMME

During the event, delegates will have the opportunity to tailor their agenda and attend a variety of workshops sessions taking place throughout the day.

Please make yourself familiar with the programme and the workshops on offer.

You do not need to book onto any workshop sessions, these will operate on a first come first serve basis, and some rooms do have capacity limitations, so be sure to get to your sessions on time!

Lunch and refreshments will be provided.



SOCIAL MEDIA

Please use the hashtag # when discussing the event on social media.

Beat's Twitter handle is [@BeatED](https://twitter.com/BeatED) and our Facebook page can be found at [beat.eating.disorders](https://www.facebook.com/beat.eating.disorders).



VENUE INFO

WIFI

At The Civic Centre Chelmsford, delegates can enjoy the convenience of Wi-Fi accessibility across all conference spaces and public areas. While this service is offered for free upon signing up, it's important to note that the Wi-Fi network is not considered secure. The Free wifi is provided by O2.

ACCOMMODATION

The closest hotel is county Hotel on Rainsford Rd and the Premier Inn on Victoria Rd, but as the venue is right in the heart of the city there is an abundance of hotels to suit every budget within walking distance.

VENUE INFO

PHOTOGRAPHY

Please be aware that we will be taking photographs & video at the event, which may be included in Beat's printed or online publications, on our website & may be circulated to the media. If you have any questions, please discuss this with a member of the event team at the registration desk or email the team on events@beateatingdisorders.org.uk



VENUE INFO

ACCESSIBILITY

There is lift access to the first floor where the event is being held.

All rooms have wheelchair spaces for those unable to transfer into a seat.

The Chamber has hearing loops, the Marconi and Crompton have induction loops.

There are accessible toilets on all floors, which are clearly signposted.

There are designated safe areas throughout the building for any delegates unable to evacuate using stairs in the event of an emergency situation.

TRAVEL

The Civic Centre Chelmsford is in the heart of Chelmsford, minutes from city center.

BY BUS

The Civic Centre is next to Chelmsford Bus Station in Duke Street. You can look at [First Essex](#) to check which buses stop on Duke Street.

BY CAR

The nearest car parks are:

[Fairfield Road](#)

[Townfield Street](#)

[West End](#)

The nearest [Park and Ride](#) stop is on Victoria Road.

For more information on a range of short-term, long-term and mixed stay parking near the Civic centre please [click here](#).

TRAVEL

BY RAIL

The nearest train station to the Civic Centre is Chelmsford Station. You can look at [National Rail](#) to check which trains stop at Chelmsford Station. The station is less than a five minute walk from the Civic Centre.

BY BIKE

There are bike racks:
by the main entrance to the Civic Centre on Duke Street
in [Marconi Plaza](#)

ANY QUESTIONS?

Should you require any further assistance with your booking please contact the events team on 01603 753310 or email events@beateatingdisorders.org.uk

Once again thank you for booking onto the
Empowering care: Enhancing eating disorder awareness and support in Essex event!

We look forward to seeing you in Chelmsford!

Beat shall not be liable for any failure to fulfil this event where failure is caused by supervening circumstances including weather, fire, flood, earthquake, war, riots, acts of terrorism or events which without fault of either party, render fulfilment impossible. Beat however, cannot be responsible for delegates' travel & accommodation commitments for which they may feel it prudent to insure.



www.beateatingdisorders.org.uk

Unit 1 Chalk Hill House,
19 Rosary Road,
Norwich,
NR1 1SZ

0300 123 3355

info@beateatingdisorders.org.uk

A charity registered in England and Wales (801343) and
Scotland (SC039309). Company limited by guarantee no
2368495.